

## Unmatched versatility, exceptional reliability

The Club Car Carryall is an industry workhorse, renowned for its ease of use and day-in, day-out durability. With multiple models and accessories available, you'll find the Carryall that fits your course—and works as hard as your crew.




### Standard Colors



Dark Gray



White



Dark Green



Bright Blue

### Premium Colors



Beige



Classic Blue



Titanium Silver



Red



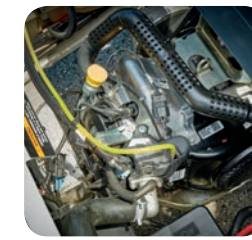
Black



## Where Our Standards Meet Yours

The Carryall 502 combines the features you need most to do your best work with the quality, performance, and engineering of our 500 series. No detail was left out to ensure this vehicle works as intuitively and relentlessly as you do.

### MORE SPACE FOR EQUIPMENT



### POWER AND RELIABILITY IN ANY ENVIRONMENT

#### KOHLER OVERHEAD VALVE EFI ENGINE

At the heart of Carryall hums our new power plant, sporting a 14 horsepower rated engine. The overhead cam engine with electronic fuel injection (EFI) delivers a 30% power boost and still reduces fuel consumption by up to 50%.\*

#### SAVE ON MORE THAN JUST FUEL COSTS.

- Build quality, including case-hardened steel timing chain, lowers maintenance costs
- Runs cooler, quieter, with lower emissions
- Weathers all conditions; starts fast even on the coldest mornings
- Automatically adjusts for higher altitudes
- No carburetor or choke to master or maintain
- No oil filter to change; splash lubrication reduces maintenance
- Backed by the industry's best warranty



### E.R.I.C.

The Carryall 300 Turf is the only utility vehicle equipped with E.R.I.C., Club Car's advanced charging system. Efficient. Reliable. Intelligent. Connected. E.R.I.C. does it all. With cutting-edge features built into a smaller, lighter, and infinitely smarter design, E.R.I.C. will have an immediate impact on your operation.

## OPTIONS & ACCESSORIES

More accessories available. Ask your Club Car sales representative for details.



Canopy Top



Heavy-Duty Brush Guard



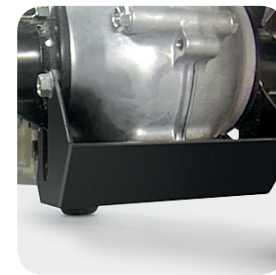
Stakeside Kit



Hitch



Electric Bed Lift



Differential Guard



Heavy-Duty Batteries



Battery Capacity Indicator



5-Spoke Wheel Cover



Fuel Gauge



ROPS Cab  
(Front Hinge Door)



USB Port



Soft Doors



Cab Outside Mirrors



LED Headlights



Cargo Tool Box



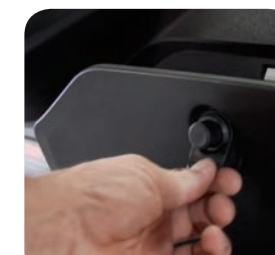
Limited Slip Differential



Extra-Traction Turf Tires



Small Wheel Package



Locking Glove Box



## Haul more gear, more securely, using VersAttach™

VersAttach, the bed box rail system exclusively from Club Car, expands your payload while securing whatever's on board. Sturdy channels engineered into the walls of the cargo box accept a variety of attachments—cleats, hooks, and clamps—for storing, tying down, and protecting tools and gear in transit.



A variety of equipment—cleats, hooks, clamps—is available to fit tools and cargo



Secure expensive power tools, protecting them from transit damage



Attachment clamps are injection molded for solid fit and dependable performance



Add/remove/relocate clamps and tie-downs to fit your cargo



Reinforced aluminum channels can handle almost any load



## For the long haul

When it comes to maximizing your investment on a hardworking vehicle, nothing fits the bill like a Carryall 700. With 1500 pounds of capacity and almost six feet of cargo space, it handles your course's most demanding jobs, all day long.

CARRYALL 700



CARRYALL1500

## The Gentle Giant

Call on the Carryall 1500 2WD for the heavy-duty jobs when you still need to tread lightly and protect your course.

Enjoy some of the highest ground clearance, steady handling on rough terrain, and upgradeable load capabilities up to 3/4 of a ton.





**CARRYALL 300 TURF**



**ELECTRIC**

**GASOLINE**

**CARRYALL 500 TURF**



**ELECTRIC**

**GASOLINE**

**CARRYALL 502 TURF**



**ELECTRIC**

**GASOLINE**

<b>ENGINE/MOTOR TYPE</b>	48-volt DC	Kohler EFI, 4-cycle Gas	48-volt DC	Kohler EFI, 4-cycle Gas	48-volt DC	Kohler EFI, 4-cycle Gas
<b>CONTROLLER</b>	250 Amp - Solid state	N/A	500 Amp - Solid state	N/A	500 Amp - Solid state	N/A
<b>DISPLACEMENT</b>	N/A	404 cc	N/A	404 cc	N/A	404 cc
<b>CYLINDERS</b>	N/A	Single	N/A	Single	N/A	Single
<b>VALVING</b>	N/A	Overhead cam	N/A	Overhead cam	N/A	Overhead cam
<b>COOLING</b>	N/A	Air cooled	N/A	Air cooled	N/A	Air cooled
<b>HORSEPOWER (RATED)</b>	3.3 hp (2.4 kW) rated, peak 13 hp (9.6 kW)	14.0 hp (10.3 kW) rated @ 3600 rpm per SAE J1940	3.7 hp (2.7kW) rated, peak 20 hp (14.9 kW)	14.0 hp (10.3 kW) rated @ 3600 rpm per SAE J1940	3.7 hp (2.7kW) rated, peak 20 hp (14.9 kW)	14.0 hp (10.3 kW) rated @ 3600 rpm per SAE J1940
<b>MAX TORQUE</b>	34.5 ft-lb (46.7 Nm) rated @ 1980 rpm	19.91 ft-lb (27.0 Nm) rated @ 2400 rpm	71 ft-lb (96.2 Nm) rated @ 1450 rpm	19.91 ft-lb (27.0 Nm) rated @ 2400 rpm	71 ft-lb (96.2 Nm) rated @ 1450 rpm	19.91 ft-lb (27.0 Nm) rated @ 2400 rpm
<b>LUBRICATION</b>	N/A	Splash lubrication	N/A	Splash lubrication	N/A	Splash lubrication
<b>GOVERNOR</b>	N/A	Ground speed	N/A	Ground speed	N/A	Ground speed
<b>TRANSMISSION</b>	Direct drive, double reduction helical gear	Continuously Variable Transmission (CVT)	Direct drive, double reduction helical gear	Continuously Variable Transmission (CVT)	Direct drive, double reduction helical gear	Continuously Variable Transmission (CVT)
<b>FRONT/REAR DIFFERENTIAL</b>	N/A	N/A	N/A	N/A	N/A	N/A
<b>GEAR SELECTION</b>	Forward/Neutral/Reverse	Forward/Neutral/Reverse	Forward/Neutral/Reverse	Forward/Neutral/Reverse	Forward/Neutral/Reverse	Forward/Neutral/Reverse
<b>GEAR RATIO</b>	12.32:1	11.47:1 forward; 15.63:1 reverse	12.32:1	11.47:1 forward; 15.63:1 reverse	12.32:1	11.47:1 forward; 15.63:1 reverse
<b>IGNITION</b>	N/A	Capacitive discharge	N/A	Capacitive discharge	N/A	Capacitive discharge
<b>BATTERY</b>	Six 8-volt flooded lead acid	12-volt 500 CCA 105 min reserve	Eight 6-volt flooded lead acid	12-volt 500 CCA 105 min reserve	Eight 6-volt flooded lead acid	12-volt 500 CCA 105 min reserve
<b>CHARGER</b>	E.R.I.C. (650 W high frequency)	N/A	On-board DeltaQ QuiQ (1 kW high frequency)	N/A	On-board DeltaQ QuiQ (1 kW high frequency)	N/A
<b>HEADLIGHTS</b>	Two 37.5 watt halogen	Two 37.5 watt halogen	Two 37.5 watt halogen	Two 37.5 watt halogen	Two 37.5 watt halogen	Two 37.5 watt halogen
<b>FUEL DELIVERY SYSTEM</b>	N/A	Electronic Fuel Injection (EFI)	N/A	Electronic Fuel Injection (EFI)	N/A	Electronic Fuel Injection (EFI)
<b>FUEL CAPACITY</b>	N/A	5.5 gal (20.8 L)	N/A	5.5 gal (20.8 L)	N/A	5.5 gal (20.8 L)
<b>STEERING MECHANISM</b>	Self-adjusting rack and pinion	Self-adjusting rack and pinion	Self-adjusting rack and pinion	Self-adjusting rack and pinion	Self-adjusting rack and pinion	Self-adjusting rack and pinion
<b>SUSPENSION (FRONT)</b>	Independent leaf spring with dual hydraulic shocks	Independent leaf spring with dual hydraulic shocks	Independent leaf spring with dual hydraulic shocks	Independent leaf spring with dual hydraulic shocks	Independent leaf spring with dual hydraulic shocks	Independent leaf spring with dual hydraulic shocks
<b>SUSPENSION (REAR)</b>	Semi-independent leaf spring with dual hydraulic shocks	Semi-independent leaf spring with dual hydraulic shocks	Semi-independent leaf spring with dual hydraulic shocks	Semi-independent leaf spring with dual hydraulic shocks	Semi-independent leaf spring with dual hydraulic shocks	Semi-independent leaf spring with dual hydraulic shocks
<b>BRAKES</b>	Rear-wheel, self-adjusting mechanical drum	Rear-wheel, self-adjusting mechanical drum	4-wheel mechanical drum	4-wheel mechanical drum	4-wheel mechanical drum	4-wheel mechanical drum
<b>PARK BRAKE</b>	Foot operated, multi-lock	Foot operated, multi-lock	Foot operated, multi-lock	Foot operated, multi-lock	Foot operated, multi-lock	Foot operated, multi-lock
<b>BODY (FRONT &amp; FINISH)</b>	ArmorFlex® with automotive paint/clearcoat, aluminum finish	ArmorFlex® with automotive paint/clearcoat, aluminum finish	ArmorFlex® with automotive paint/clearcoat, aluminum finish	ArmorFlex® with automotive paint/clearcoat, aluminum finish	ArmorFlex® with automotive paint/clearcoat, aluminum finish	ArmorFlex® with automotive paint/clearcoat, aluminum finish
<b>BODY (FRAME &amp; REAR)</b>	Aluminum	Aluminum	Aluminum	Aluminum	Aluminum	Aluminum
<b>TIRES (FRONT)</b>	20 x 10-10, 6-ply	20 x 10-10, 6-ply	20 x 10-10, 6-ply	20 x 10-10, 6-ply	18 x 8.50 - 8, 6-ply	18 x 8.50 - 8, 6-ply
<b>TIRES (REAR)</b>	20 x 10-10, 6-ply	20 x 10-10, 6-ply	20 x 10-10, 6-ply	20 x 10-10, 6-ply	18 x 8.50 - 8, 6-ply	18 x 8.50 - 8, 6-ply
<b>WHEELBASE</b>	65.5 in (166 cm)	65.5 in (166 cm)	78.1 in (198 cm)	78.1 in (198 cm)	78.1 in (198 cm)	78.1 in (198 cm)
<b>OVERALL HEIGHT</b>	47.1 in (120 cm)	47.1 in (120 cm)	47.1 in (120 cm)	47.1 in (120 cm)	47.1 in (120 cm)	47.1 in (120 cm)
<b>OVERALL LENGTH</b>	110.1 in (279.6 cm)	110.1 in (279.6 cm)	118 in (299.7 cm)	118 in (299.7 cm)	118 in (299.7 cm)	118 in (299.7 cm)
<b>BED L X W X H (CARGO BOX)</b>	36.2 x 47.5 x 10.5 in (91.9 x 120.6 x 26.6 cm)	36.2 x 47.5 x 10.5 in (91.9 x 120.6 x 26.6 cm)	44.2 x 47.5 x 10.5 in (112.2 x 120.6 x 26.6 cm)	44.2 x 47.5 x 10.5 in (112.2 x 120.6 x 26.6 cm)	44.2 x 47.5 x 10.5 in (112.2 x 120.6 x 26.6 cm)	44.2 x 47.5 x 10.5 in (112.2 x 120.6 x 26.6 cm)
<b>DIFFERENTIAL GROUND CLEARANCE</b>	5.6 in (14 cm)	5.2 in (13 cm)	5.6 in (14 cm)	5.6 in (14 cm)	4.2 in (10.7 cm)	4.2 in (10.7 cm)
<b>TRACK WIDTH (FRONT)</b>	36.6 in (93 cm)	36.6 in (93 cm)	36.6 in (93 cm)	36.6 in (93 cm)	36.6 in (93 cm)	36.6 in (93 cm)
<b>TRACK WIDTH (REAR)</b>	39.5 in (100 cm)	39.5 in (100 cm)	39.5 in (100 cm)	39.5 in (100 cm)	39.5 in (100 cm)	39.5 in (100 cm)
<b>MAX WIDTH (W/O MIRRORS)</b>	50.3 in (128 cm)	50.3 in (128 cm)	50.3 in (128 cm)	50.3 in (128 cm)	50.3 in (128 cm)	50.3 in (128 cm)
<b>CURB WEIGHT (W/ BATTERIES)</b>	1105 lb (501 kg)	817 lb (371 kg)	1393 lb (632 kg)	907 lb (411 kg)	1393 lb (632 kg)	907 lb (411 kg)
<b>TOTAL VEHICLE CAPACITY</b>	800 lb (363 kg)	800 lb (363 kg)	1200 lb (544 kg)	1200 lb (544 kg)	1200 lb (544 kg)	1200 lb (544 kg)
<b>BED LOAD CAPACITY</b>	300 lb (136 kg)	300 lb (136 kg)	800 lb (363 kg)	800 lb (363 kg)	800 lb (363 kg)	800 lb (363 kg)
<b>TOWING CAPACITY</b>	800 lb (363 kg)	800 lb (363 kg)	1500 lb (680 kg)	1500 lb (680 kg)	1500 lb (680 kg)	1500 lb (680 kg)
<b>COMBINED GROSS VEHICLE CAPACITY</b>	800 lb (363 kg)	800 lb (363 kg)	1500 lb (680 kg)	1500 lb (680 kg)	1500 lb (680 kg)	1500 lb (680 kg)
<b>SPEED</b>	5-17 mph (8-27 km/h)	15-17 mph (24-27 km/h)	5-17 mph (8-27 km/h)	15-17 mph (24-27 km/h)	5-17 mph (8-27 km/h)	15-17 mph (24-27 km/h)
<b>TURNING RADIUS</b>	108.7 in (276 cm)	108.7 in (276 cm)	119 in (302 cm)	119 in (302 cm)	119 in (302 cm)	119 in (302 cm)
<b>WARRANTY</b>	4-year limited battery; 3-year limited powertrain/frame; 2-year limited remaining vehicle	3-year/3000 hour limited powertrain/frame; 2-year limited remaining vehicle	4-year limited battery; 3-year limited powertrain/frame; 2-year limited remaining vehicle	3-year/3000 hour limited powertrain/frame; 2-year limited remaining vehicle	4-year limited battery; 3-year limited powertrain/frame; 2-year limited remaining vehicle	3-year/3000 hour limited powertrain/frame; 2-year limited remaining vehicle

### CARRYALL 550 TURF



**ELECTRIC**

**GASOLINE**

### CARRYALL 700 TURF



**ELECTRIC**

**GASOLINE**

### CARRYALL 1500 4X2



**GASOLINE†**

<b>ENGINE/MOTOR TYPE</b>	48-volt DC	Kohler EFI, 4-cycle Gas	48-volt DC	Kohler EFI, 4-cycle Gas	Kawasaki 4-cycle, industrial grade
<b>CONTROLLER</b>	500 Amp - Solid state	N/A	500 Amp - Solid state	N/A	N/A
<b>DISPLACEMENT</b>	N/A	404 cc	N/A	404 cc	675 cc
<b>CYLINDERS</b>	N/A	Single	N/A	Single	Twin-cylinder
<b>VALVING</b>	N/A	Overhead cam	N/A	Overhead cam	OHV
<b>COOLING</b>	N/A	Air cooled	N/A	Air cooled	Air cooled
<b>HORSEPOWER (RATED)</b>	3.7 hp (2.7kW) rated, peak 20 hp (14.9 kW)	14.0 hp (10.3 kW) rated @ 3600 rpm per SAE J1940	3.7 hp (2.7kW) rated, peak 20 hp (14.9 kW)	14.0 hp (10.3 kW) rated @ 3600 rpm per SAE J1940	20.1 hp (15.0 kW) rated @ 3400 rpm per SAE J1349
<b>MAX TORQUE</b>	71 ft-lb (96.2 Nm) rated @ 1450 rpm	19.91 ft-lb (27.0 Nm) rated @ 2400 rpm	71 ft-lb (96.2 Nm) rated @ 1450 rpm	19.91 ft-lb (27.0 N-m) rated @ 2400 rpm	36.5 ft/lb (49.5 Nm)
<b>LUBRICATION</b>	N/A	Splash lubrication	N/A	Splash lubrication	Full-pressure, spin-on oil filter
<b>GOVERNOR</b>	N/A	Ground speed	N/A	Ground speed	Automatic ground speed sensing
<b>TRANSMISSION</b>	Direct drive, double reduction helical gear	Continuously Variable Transmission (CVT)	Direct drive, double reduction helical gear	Continuously Variable Transmission (CVT)	Wide ratio CVT; 3.7:1 low, 0.59:1 high
<b>FRONT/REAR DIFFERENTIAL</b>	N/A	N/A	N/A	N/A	Automatic locking rear differential
<b>GEAR SELECTION</b>	Forward/Neutral/Reverse	Forward/Neutral/Reverse	Forward/Neutral/Reverse	Forward/Neutral/Reverse	Forward/Neutral/Reverse
<b>GEAR RATIO</b>	12.32:1	11.47:1 forward; 15.63:1 reverse	12.32:1	11.47:1 forward; 15.63:1 reverse	5.39:1 forward, 7.79:1 reverse, 3.3:1 differential
<b>IGNITION</b>	N/A	Capacitive discharge	N/A	Capacitive discharge	Transistorized magneto
<b>BATTERY</b>	Eight 6-volt flooded lead acid	12-volt 500 CCA 105 min reserve	Eight 6-volt flooded lead acid	12-volt 500 CCA 105 min reserve	12-volt 500 CCA 105 min reserve
<b>CHARGER</b>	On-board DeltaQ QuiQ (1 kW high frequency)	N/A	On-board DeltaQ QuiQ (1 kW high frequency)	N/A	N/A
<b>HEADLIGHTS</b>	Two 37.5 watt halogen	Two 37.5 watt halogen	Two 37.5 watt halogen	Two 37.5 watt halogen	Two 55 watt halogen
<b>FUEL DELIVERY SYSTEM</b>	N/A	Electronic Fuel Injection (EFI)	N/A	Electronic Fuel Injection (EFI)	Carburetor
<b>FUEL CAPACITY</b>	N/A	5.5 gal (20.8 L)	N/A	5.5 gal (20.8 L)	6.5 gal (24.6 L)
<b>STEERING MECHANISM</b>	Self-adjusting rack and pinion	Self-adjusting rack and pinion	Self-adjusting rack and pinion	Self-adjusting rack and pinion	Rack and pinion with tilt steering
<b>SUSPENSION (FRONT)</b>	Independent leaf spring with dual hydraulic shocks	Independent leaf spring with dual hydraulic shocks	Independent leaf spring with dual hydraulic shocks	Independent leaf spring with dual hydraulic shocks	Independent double A-arms with coil-over shocks
<b>SUSPENSION (REAR)</b>	Semi-independent leaf spring with dual hydraulic shocks	Semi-independent leaf spring with dual hydraulic shocks	Semi-independent leaf spring with dual hydraulic shocks	Semi-independent leaf spring with dual hydraulic shocks	Semi-independent 4-link solid axle
<b>BRAKES</b>	4-wheel mechanical drum	4-wheel mechanical drum	4-wheel mechanical drum	4-wheel mechanical drum	Twin piston front, single piston rear hydraulic disc
<b>PARK BRAKE</b>	Foot operated, multi-lock	Foot operated, multi-lock	Foot operated, multi-lock	Foot operated, multi-lock	Mechanical disc
<b>BODY (FRONT &amp; FINISH)</b>	ArmorFlex® with automotive paint/clearcoat, aluminum finish	ArmorFlex® with automotive paint/clearcoat, aluminum finish	ArmorFlex® with automotive paint/clearcoat, aluminum finish	ArmorFlex® with automotive paint/clearcoat, aluminum finish	GE Geloy high-impact, scratch-resistant, injection-molded color, automotive finish
<b>BODY (FRAME &amp; REAR)</b>	Aluminum	Aluminum	Aluminum	Aluminum	Tubular aluminum
<b>TIRES (FRONT)</b>	22 x 10-10, 4-ply turf tread; 22 x 10-10, 6-ply heavy-duty all-terrain	22 x 10-10, 4-ply turf tread; 22 x 10-10, 6-ply heavy-duty all-terrain	20 x 10-10, 6-ply	20 x 10-10, 6-ply	4-ply turf; 23 x 10.5 x 12
<b>TIRES (REAR)</b>	22 x 10-10, 4-ply turf tread; 22 x 10-10, 6-ply heavy-duty all-terrain	22 x 10-10, 4-ply turf tread; 22 x 10-10, 6-ply heavy-duty all-terrain	20 x 10-10, 6-ply	20 x 10-10, 6-ply	4-ply turf; 24 x 10.5 .x 12
<b>WHEELBASE</b>	78.1 in (198 cm)	78.1 in (198 cm)	99.1 in (252 cm)	99.1 in (252 cm)	88.7 in (225 cm)
<b>OVERALL HEIGHT</b>	51.2 in (130 cm)	51.2 in (130 cm)	47.1 in (120 cm)	47.1 in (120cm)	52.6 in (134 cm)
<b>OVERALL LENGTH</b>	118 in (300 cm)	118 in (300 cm)	137.5 in (349 cm)	137.5 in (349 cm)	124.6 in (317 cm)
<b>BED L X W X H (CARGO BOX)</b>	44.2 x 47.5 x 10.5 in (112 x 121 x 27 cm)	44.2 x 47.5 x 10.5 in (112 x 121 x 27 cm)	65.5 x 47.5 x 10.5 in (166 x 121 x 27 cm)	65.5 x 47.5 x 10.5 in (166 x 121 x 27 cm)	48.8 x 49.8 x 10.9 in (124 x 127 x 28 cm)
<b>DIFFERENTIAL GROUND CLEARANCE</b>	6.4 in (16.3 cm)	6.4 in (16.3 cm)	5.6 in (14.2 cm)	5.6 in (14.2 cm)	7.3 in (19 cm)
<b>TRACK WIDTH (FRONT)</b>	36.6 in (93 cm)	36.6 in (93 cm)	36.6 in (93 cm)	36.6 in (93 cm)	48.8 in (124 cm)
<b>TRACK WIDTH (REAR)</b>	39.5 in (100 cm)	39.5 in (100 cm)	39.5 in (100 cm)	39.5 in (100 cm)	48.8 in (124 cm)
<b>MAX WIDTH (W/O MIRRORS)</b>	50.3 in (128 cm)	50.3 in (128 cm)	50.3 in (128 cm)	50.3 in (128 cm)	58.5 in (149 cm)
<b>CURB WEIGHT (W/ BATTERIES)</b>	1402 lb (636 kg)	942 lb (427 kg)	1475 lb (669 kg)	993 lb (450 kg)	1410 lb (640 kg)
<b>TOTAL VEHICLE CAPACITY</b>	900 lb (408 kg)	900 lb (408 kg)	1500 lb (680 kg)	1500 lb (680 kg)	1450 lb (658 kg)/1900 lb (862 kg)*
<b>BED LOAD CAPACITY</b>	500 lb (227 kg)	500 lb (227 kg)	1000 lb (454 kg)	1000 lb (454 kg)	1050 lb (476 kg)/1500 lb (680 kg)*
<b>TOWING CAPACITY</b>	900 lb (408 kg)	900 lb (408 kg)	1500 lb (680 kg)	1500 lb (680 kg)	1450 lb (658 kg)/1900 lb (862 kg)*
<b>COMBINED GROSS VEHICLE CAPACITY</b>	900 lb (408 kg)	900 lb (408 kg)	1500 lb (680 kg)	1500 lb (680 kg)	1450 lb (658 kg)/1900 lb (862 kg)*
<b>SPEED</b>	15-17 mph (24-27 km/h)	5-17 mph (8-27 km/h)	5-17 mph (8-27 km/h)	15-17 mph (24-27 km/h)	19 mph (30.6 km/h)
<b>TURNING RADIUS</b>	126.5 in (321 cm)	126.5 in (321 cm)	162.8 in (413 cm)	162.8 in (413 cm)	150.5 in (382 cm)
<b>WARRANTY</b>	4-year limited battery; 3-year limited powertrain/frame; 2-year limited remaining vehicle	3-year/3000 hour limited powertrain/frame; 2-year limited remaining vehicle	4-year limited battery; 3-year limited powertrain/frame; 2-year limited remaining vehicle	3-year/3000 hour limited powertrain/frame; 2-year limited remaining vehicle	2-year/2000 hour limited

\*3/4-ton option. \*\* High-capacity option. †Not available in the EU and other CE requiring countries.

## CARRYALL 1500 4X4



**GASOLINE†**

**DIESEL**

## CARRYALL 1700 4X4



**GASOLINE†**

**DIESEL**

<b>ENGINE/MOTOR TYPE</b>	Kawasaki 4-cycle, industrial grade	Kubota D722, industrial grade	Kawasaki 4-cycle, industrial grade	Kubota D722, industrial grade
<b>CONTROLLER</b>	N/A	N/A	N/A	N/A
<b>DISPLACEMENT</b>	675 cc	719 cc	675 cc	719 cc
<b>CYLINDERS</b>	Twin-cylinder	3-cylinder	Twin-cylinder	3-cylinder
<b>VALVING</b>	OHV	OHV	OHV	OHV
<b>COOLING</b>	Air cooled	Liquid cooled	Air cooled	Liquid cooled
<b>HORSEPOWER (RATED)</b>	20.1 hp (15.0 kW) rated @ 3400 rpm per SAE J1349	20.0 hp (15.0 kW) rated @ 3600 rpm per SAE J1995	20.1 hp (15.0 kW) rated @ 3400 rpm per SAE J1349	20.0 hp (15.0 kW) rated @ 3600 rpm per SAE J1995
<b>MAX TORQUE</b>	36.5 ft/lb (49.5 Nm)	33 ft/lb (45 Nm)	36.5 ft/lb (49.5 Nm)	33 ft/lb (45 Nm)
<b>LUBRICATION</b>	Full-pressure, spin-on oil filter	Full-pressure, spin-on oil filter	Full-pressure, spin-on oil filter	Full-pressure, spin-on oil filter
<b>GOVERNOR</b>	Automatic ground speed sensing	Automatic ground speed sensing	Automatic ground speed sensing	Automatic ground speed sensing
<b>TRANSMISSION</b>	Wide ratio CVT; 3.7:1 low, 0.59:1 high	Wide ratio CVT; 3.7:1 low, 0.59:1 high	Wide ratio CVT; 3.7:1 low, 0.59:1 high	Wide ratio CVT; 3.7:1 low, 0.59:1 high
<b>FRONT/REAR DIFFERENTIAL</b>	IntelliTrak™ Automatic 4-wheel Drive	IntelliTrak™ Automatic 4-wheel Drive	IntelliTrak™ Automatic 4-wheel Drive	IntelliTrak™ Automatic 4-wheel Drive
<b>GEAR SELECTION</b>	Forward/Neutral/Reverse	Forward/Neutral/Reverse	Forward/Neutral/Reverse	Forward/Neutral/Reverse
<b>GEAR RATIO</b>	5.39:1 forward, 7.79:1 reverse, 3.3:1 differential	5.39:1 forward, 7.79:1 reverse, 3.3:1 differential	5.39:1 forward, 7.79:1 reverse, 3.3:1 differential	5.39:1 forward, 7.79:1 reverse, 3.3:1 differential
<b>IGNITION</b>	Transistorized magneto	Compression	Transistorized magneto	Compression
<b>BATTERY</b>	12-volt 500 CCA 105 min reserve	12-volt 500 CCA 105 min reserve	12-volt 500 CCA 105 min reserve	12-volt 500 CCA 105 min reserve
<b>CHARGER</b>	N/A	N/A	N/A	N/A
<b>HEADLIGHTS</b>	Two 55 watt halogen	Two 55 watt halogen	Two 55 watt halogen	Two 55 watt halogen
<b>FUEL DELIVERY SYSTEM</b>	Carburetor	Mechanical injection	Carburetor	Mechanical injection
<b>FUEL CAPACITY</b>	6.5 gal (24.6 L)	6.5 gal (24.6 L)	6.5 gal (24.6 L)	6.5 gal (24.6 L)
<b>STEERING MECHANISM</b>	Rack and pinion with tilt steering	Rack and pinion with tilt steering	Rack and pinion with tilt steering	Rack and pinion with tilt steering
<b>SUSPENSION (FRONT)</b>	Independent double A-arms with coil-over shocks	Independent double A-arms with coil-over shocks	Independent double A-arms with coil-over shocks	Independent double A-arms with coil-over shocks
<b>SUSPENSION (REAR)</b>	Semi-independent 4-link solid axle	Semi-independent 4-link solid axle	Semi-independent 4-link solid axle	Semi-independent 4-link solid axle
<b>BRAKES</b>	Twin piston front, single piston rear hydraulic disc	Twin piston front, single piston rear hydraulic disc	Twin piston front, single piston rear hydraulic disc	Twin piston front, single piston rear hydraulic disc
<b>PARK BRAKE</b>	Mechanical disc	Mechanical disc	Mechanical disc	Mechanical disc
<b>BODY (FRONT &amp; FINISH)</b>	GE Gelyol high-impact, scratch-resistant, injection-molded color, automotive finish	GE Gelyol high-impact, scratch-resistant, injection-molded color, automotive finish	GE Gelyol high-impact, scratch-resistant, injection-molded color, automotive finish	GE Gelyol high-impact, scratch-resistant, injection-molded color, automotive finish
<b>BODY (FRAME &amp; REAR)</b>	Tubular aluminum	Tubular aluminum	Tubular aluminum	Tubular aluminum
<b>TIRES (FRONT)</b>	All-terrain, 25 x 10.5-12, 4-ply	All-terrain, 25 x 10.5-12, 4-ply	All-terrain, 25 x 10.5-12, 4-ply	All-terrain, 25 x 10.5-12, 4-ply
<b>TIRES (REAR)</b>	All-terrain, 25 x 10.5-12, 4-ply	All-terrain, 25 x 10.5-12, 4-ply	All-terrain, 25 x 10.5-12, 4-ply	All-terrain, 25 x 10.5-12, 4-ply
<b>WHEELBASE</b>	82 in (208 cm)	82 in (208 cm)	114 in (290 cm)	114 in (290 cm)
<b>OVERALL HEIGHT</b>	78.6 in (200 cm)	78.6 in (200 cm)	78.6 in (200 cm)	78.6 in (200 cm)
<b>OVERALL LENGTH</b>	124.6 in (317 cm)	124.6 in (317 cm)	157.6 in (400 cm)	157.6 in (400 cm)
<b>BED L X W X H (CARGO BOX)</b>	48.8 x 49.8 x 10.9 in (124 x 127 x 28 cm)	48.8 x 49.8 x 10.9 in (124 x 127 x 28 cm)	48.8 x 49.8 x 10.9 in (124 x 127 x 28 cm)	48.8 x 49.8 x 10.9 in (124 x 127 x 28 cm)
<b>DIFFERENTIAL GROUND CLEARANCE</b>	8.2 in (21 cm)	8.2 in (21 cm)	8.2 in (21 cm)	8.2 in (21 cm)
<b>TRACK WIDTH (FRONT)</b>	48.8 in (124 cm)	48.8 in (124 cm)	48.8 in (124 cm)	48.8 in (124 cm)
<b>TRACK WIDTH (REAR)</b>	48.8 in (124 cm)	48.8 in (124 cm)	48.8 in (124 cm)	48.8 in (124 cm)
<b>MAX WIDTH (W/O MIRRORS)</b>	58.5 in (149 cm)	58.5 in (149cm)	58.5 in (149 cm)	58.5 in (149 cm)
<b>CURB WEIGHT (W/ BATTERIES)</b>	1430 lbs (649 kg)	1550 lbs (703 kg)	1630 lb (739 kg)	1750 lb (794 kg)
<b>TOTAL VEHICLE CAPACITY</b>	1200 lb (544 kg) 1450 lb (658 kg)**	1200 lb (544 kg) 1450 lb (658 kg)**	1600 lb (726 kg)	1600 lb (726 kg)
<b>BED LOAD CAPACITY</b>	800 lb (363 kg) 1050 lb (658 kg)**	800 lb (363 kg) 1050 lb (658 kg)**	800 lb (363 kg)	800 lb (363 kg)
<b>TOWING CAPACITY</b>	2000 lb (907 kg)	2000 lb (907 kg)	2000 lb (907 kg)	2000 lb (907 kg)
<b>COMBINED GROSS VEHICLE CAPACITY</b>	2000 lb (907 kg)	2000 lb (907 kg)	1800 lb (817 kg)	1800 lb (817 kg)
<b>SPEED</b>	25 mph (40.2 km/h)	25 mph (40.2 km/h)	25 mph (40.2 km/h)	25 mph (40.2 km/h)
<b>TURNING RADIUS</b>	150.5 in (382 cm)	150.5 in (382 cm)	206.5 in (525 cm)	206.5 in (525 cm)
<b>WARRANTY</b>	2-year/2000 hour limited	2-year/2000 hour limited	2-year/2000 hour limited	2-year/2000 hour limited

\*3/4-ton option. \*\* High-capacity option. †Not available in the EU and other CE requiring countries.

Visit [clubcar.com](http://clubcar.com) for more on Carryall's warranty.